

Engine Bearings are carefully specified for individual applications.

Engine Bearings are carefully specified for individual applications. In a number of cases, the Big End Bearing can use common upper and lower halves, which are the same shells just in reverse to one another.

However, in most modern applications the upper half needs to be a higherspecification, with technology such as Start/Stop additional strain is placed on the Thrust side of the Connecting Rod.

Upper (Thrust) Rod/Piston Side

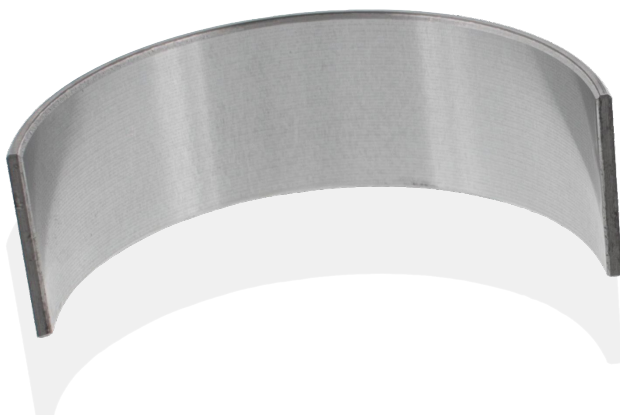


The upper half is recognised as the thrust side as during the combustion cycle, it is subject to the highest load.

The composition of the upper half big end bearing can vary, most widely used is LC/LCX, a heavy duty specification.

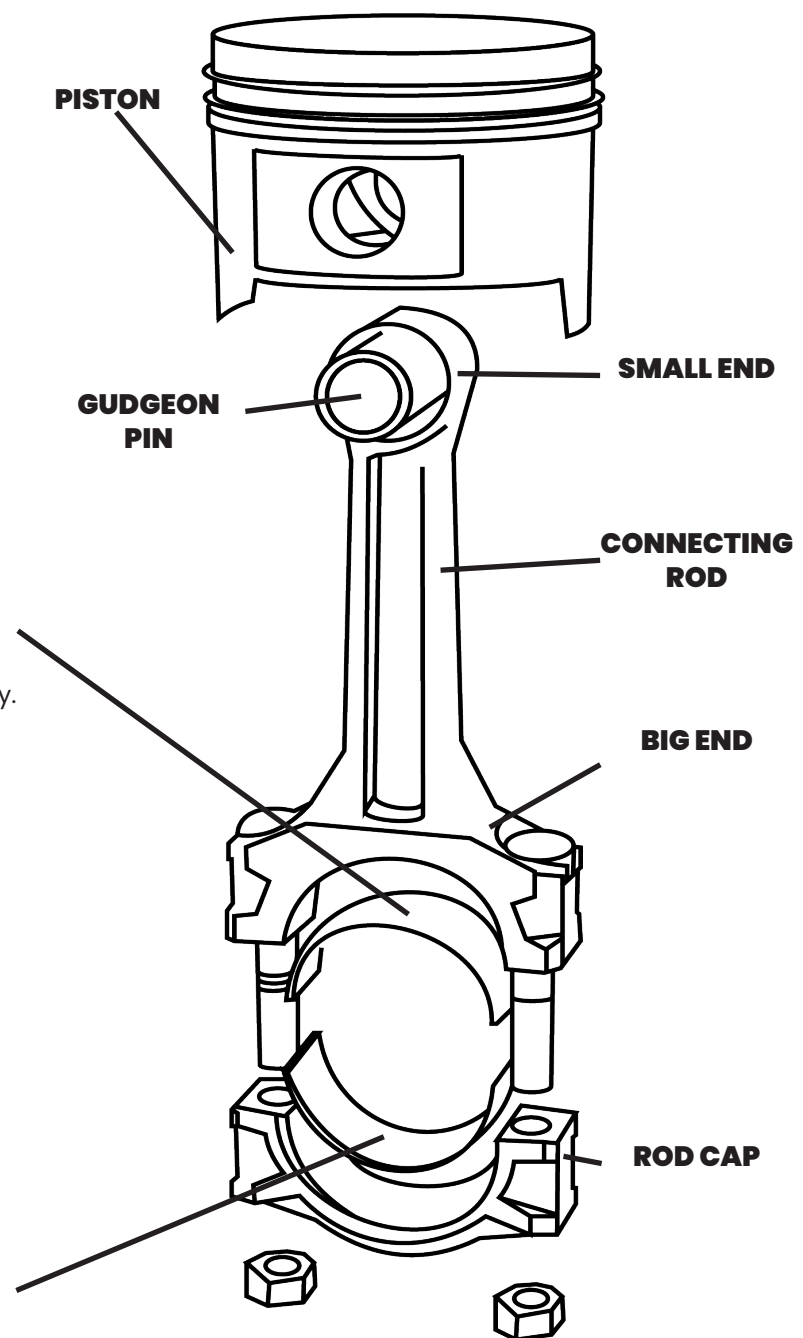
The colour of the upper shell is usually a matte white/grey.

Lower Cap Side



The lower half big end bearing, is most commonly composed of an aluminium design, with standard overlays.

The colour of the lower shell is usually a plain silver/aluminium, with a slightly reflective finish.



For more information, email technical@faiauto.com